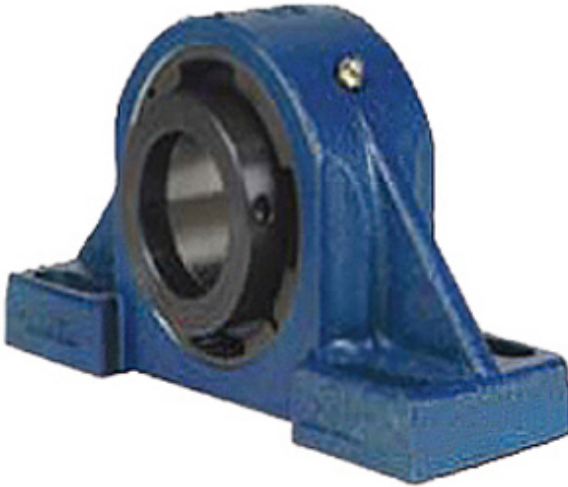




AMI BEARING LIMITED



2.438 Inch | 61.925 Millimeter x 3.39 Inch |
 86.106 Millimeter x 2.75 Inch | 69.85 Millimeter
 QM INDUSTRIES QAPF13A207SEC Pillow
 Block Bearings

Bearing No. QAPF13A207SEC

QAPF13A207SEC Bearing 2D drawings and 3D CAD models

Category	Pillow Block Bearings
Inventory	0.0
Manufacturer Name	TIMKEN
Minimum Buy Quantity	N/A
Weight	7.718
EAN	0883450045940
Product Group	M06288
Number of Mounting Holes	4
Mounting Method	Concentric Collar
Housing Style	4 Bolt Pillow Block
Rolling Element	Spherical Roller Bearing
Housing Material	Cast Steel
Expansion / Non-expansion	Expansion
Mounting Bolts	5/8 Inch
Relubricatable	Yes
Insert Part Number	22213
Seals	Double Lip Viton
Housing Configuration	1 Piece Solid
Inch - Metric	Inch
Other Features	Double Row Single Collar With Set Screw
Long Description	4 Bolt Pillow Block; 2-7/16" Bore; 2-3/4" Base to Center Height; Concentric Collar Mount; Spherical Roller



AMI BEARING LIMITED

	Bearing; 6-7/8" Minimum Bolt Spacing; 7-5/8" Bolt Spacing Maximum; Relubr
Category	Pillow Block
UNSPSC	31171511
Harmonized Tariff Code	8483.20.40.80
Noun	Bearing
Keyword String	Pillow Block
Manufacturer URL	http://www.qmbearings.com
Manufacturer Item Number	QAPF13A207SEC
Weight / LBS	20
Actual Bolt Center to Center	0 Inch 0Millimeter
D	3.39 Inch 86.106 Millimeter
Bolt Spacing Maximum	7.625 Inch 193.675Millimeter
B	2.75 Inch 69.85 Millimeter
d	2.438 Inch 61.925 Millimeter
Bolt Spacing Minimum	6.875 Inch 174.625Millimeter
Nominal Bolt Center to Center	7.3 Inch 184 Millimeter