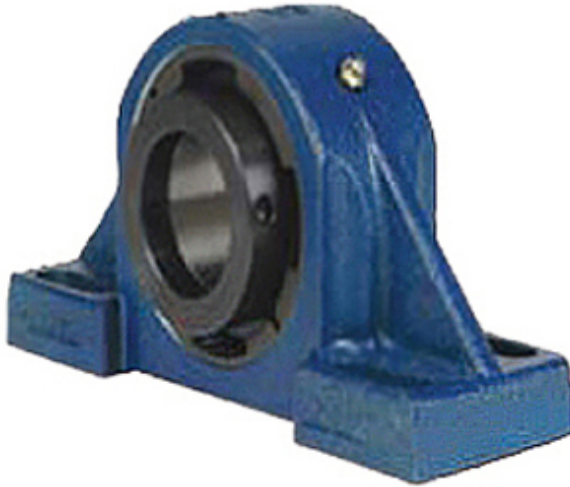




# AMI BEARING LIMITED



2.953 Inch | 75 Millimeter x 3.62 Inch | 91.948 Millimeter x 3.252 Inch | 82.6 Millimeter QM INDUSTRIES QAPF15A075SET Pillow Block Bearings

Bearing No. QAPF15A075SET

QAPF15A075SET Bearing 2D drawings and 3D CAD models

Category	Pillow Block Bearings
Inventory	0.0
Manufacturer Name	TIMKEN
Minimum Buy Quantity	N/A
Weight	9.988
EAN	0883450046169
Product Group	M06288
Number of Mounting Holes	4
Mounting Method	Concentric Collar
Housing Style	4 Bolt Pillow Block
Rolling Element	Spherical Roller Bearing
Housing Material	Cast Steel
Expansion / Non-expansion	Expansion
Mounting Bolts	5/8 Inch
Relubricatable	Yes
Insert Part Number	22215
Seals	Teflon Labyrinth
Housing Configuration	1 Piece Solid
Inch - Metric	Metric
Other Features	Double Row   Single Collar   With Set Screw
Long Description	4 Bolt Pillow Block; 75MM Bore; 82.6MM Base to Center Height; Concentric Collar Mount; Spherical



## AMI BEARING LIMITED

	Roller Bearing; 193.04MM Minimum Bolt Spacing; 231.14MM Bolt Spacing Maximum; Relubricatable; Cast Stee
Category	Pillow Block
UNSPSC	31171511
Harmonized Tariff Code	8483.20.40.80
Noun	Bearing
Keyword String	Pillow Block
Manufacturer URL	<a href="http://www.qmbearings.com">http://www.qmbearings.com</a>
Manufacturer Item Number	QAPF15A075SET
Weight / LBS	27
B	3.252 Inch   82.6 Millimeter
D	3.62 Inch   91.948 Millimeter
d	2.953 Inch   75 Millimeter
Actual Bolt Center to Center	0 Inch   0Millimeter
Bolt Spacing Maximum	9.1 Inch   231.14Millimeter
Nominal Bolt Center to Center	8.4 Inch   213 Millimeter
Bolt Spacing Minimum	7.6 Inch   193.04Millimeter