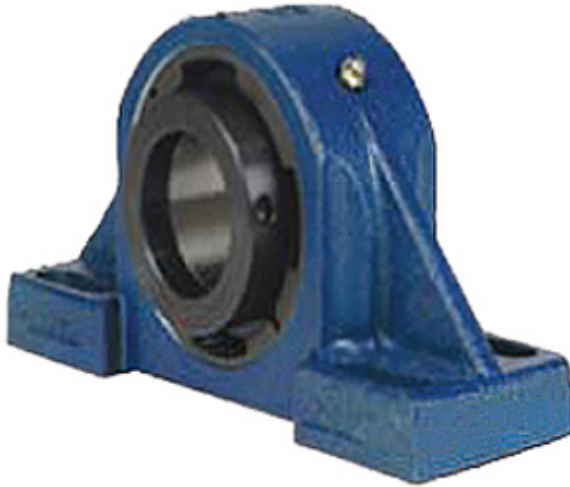




# AMI BEARING LIMITED



2.938 Inch | 74.625 Millimeter x 3.62 Inch |  
 91.948 Millimeter x 3.25 Inch | 82.55 Millimeter  
 QM INDUSTRIES QAPF15A215SET Pillow  
 Block Bearings

Bearing No. QAPF15A215SET

QAPF15A215SET Bearing 2D drawings and 3D CAD models

Category	Pillow Block Bearings
Inventory	0.0
Manufacturer Name	TIMKEN
Minimum Buy Quantity	N/A
Weight	9.988
EAN	0883450046268
Product Group	M06288
Number of Mounting Holes	4
Mounting Method	Concentric Collar
Housing Style	4 Bolt Pillow Block
Rolling Element	Spherical Roller Bearing
Housing Material	Cast Steel
Expansion / Non-expansion	Expansion
Mounting Bolts	5/8 Inch
Relubricatable	Yes
Insert Part Number	22215
Seals	Teflon Labyrinth
Housing Configuration	1 Piece Solid
Inch - Metric	Inch
Other Features	Double Row   Single Collar   With Set Screw
Long Description	4 Bolt Pillow Block; 2-15/16" Bore; 3-1/4" Base to Center Height; Concentric Collar Mount;



## AMI BEARING LIMITED

	Spherical Roller Bearing; 7.6" Minimum Bolt Spacing; 9.1" Bolt Spacing Maximum; Relubrica
Category	Pillow Block
UNSPSC	31171511
Harmonized Tariff Code	8483.20.40.80
Noun	Bearing
Keyword String	Pillow Block
Manufacturer URL	<a href="http://www.qmbearings.com">http://www.qmbearings.com</a>
Manufacturer Item Number	QAPF15A215SET
Weight / LBS	27
Bolt Spacing Maximum	9.1 Inch   231.14Millimeter
D	3.62 Inch   91.948 Millimeter
B	3.25 Inch   82.55 Millimeter
Actual Bolt Center to Center	0 Inch   0Millimeter
d	2.938 Inch   74.625 Millimeter
Nominal Bolt Center to Center	8.1 Inch   206.4 Millimeter
Bolt Spacing Minimum	7.6 Inch   193.04Millimeter