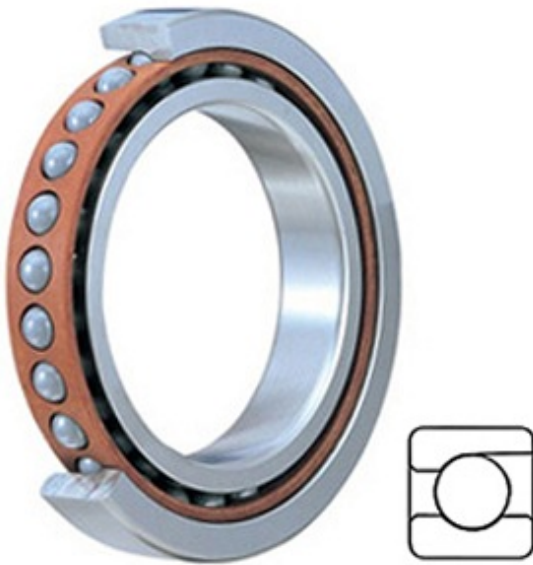




# AMI BEARING LIMITED

0.984 Inch | 25 Millimeter x 2.047 Inch | 52 Millimeter x 0.591 Inch | 15 Millimeter TIMKEN 2MM205WI SUM Precision Ball Bearings



Bearing No. 2MM205WI SUM

Category	Precision Ball Bearings
Inventory	0.0
Manufacturer Name	TIMKEN
Minimum Buy Quantity	N/A
Weight	0.127
EAN	0087796321199
Product Group	B04270
Enclosure	Open
Precision Class	ABEC 7   ISO P4
Material - Ball	Steel
Number of Bearings	1 (Single)
Contact Angle	15 Degree
Preload	Medium
Raceway Style	1 Rib Outer Ring
Cage Material	Phenolic
Rolling Element	Ball Bearing
Mounting Arrangement	Universal
Flush Ground	Yes
Inch - Metric	Metric
Other Features	Single Row   Angular Contact   Super High Precision
Long Description	25MM Bore; 52MM Outside Diameter; 15MM Width; Open Enclosure; ABEC 7   ISO P4 Precision;

2MM205WI SUM Bearing 2D drawings and 3D CAD models



## AMI BEARING LIMITED

	Steel Ball Material; 1 (Single) Bearings; 15 Degree Contact Angle; Phenolic Cage Material; 1 Rib Outer Ring Rac
Category	Precision Ball Bearings
UNSPSC	31171531
Harmonized Tariff Code	8482.10.50.28
Noun	Bearing
Keyword String	Angular Contact Ball
Manufacturer URL	<a href="http://www.timken.com">http://www.timken.com</a>
Manufacturer Item Number	2MM205WI SUM
Weight / LBS	0.28
d	0.984 Inch   25 Millimeter
B	0.591 Inch   15 Millimeter
D	2.047 Inch   52 Millimeter